



Central Government Real Estate
Agency
Ministry of the Interior and
Kingdom Relations

The new EMA premises

Future housing
of the European
Medicines Agency

Amsterdam Zuidas

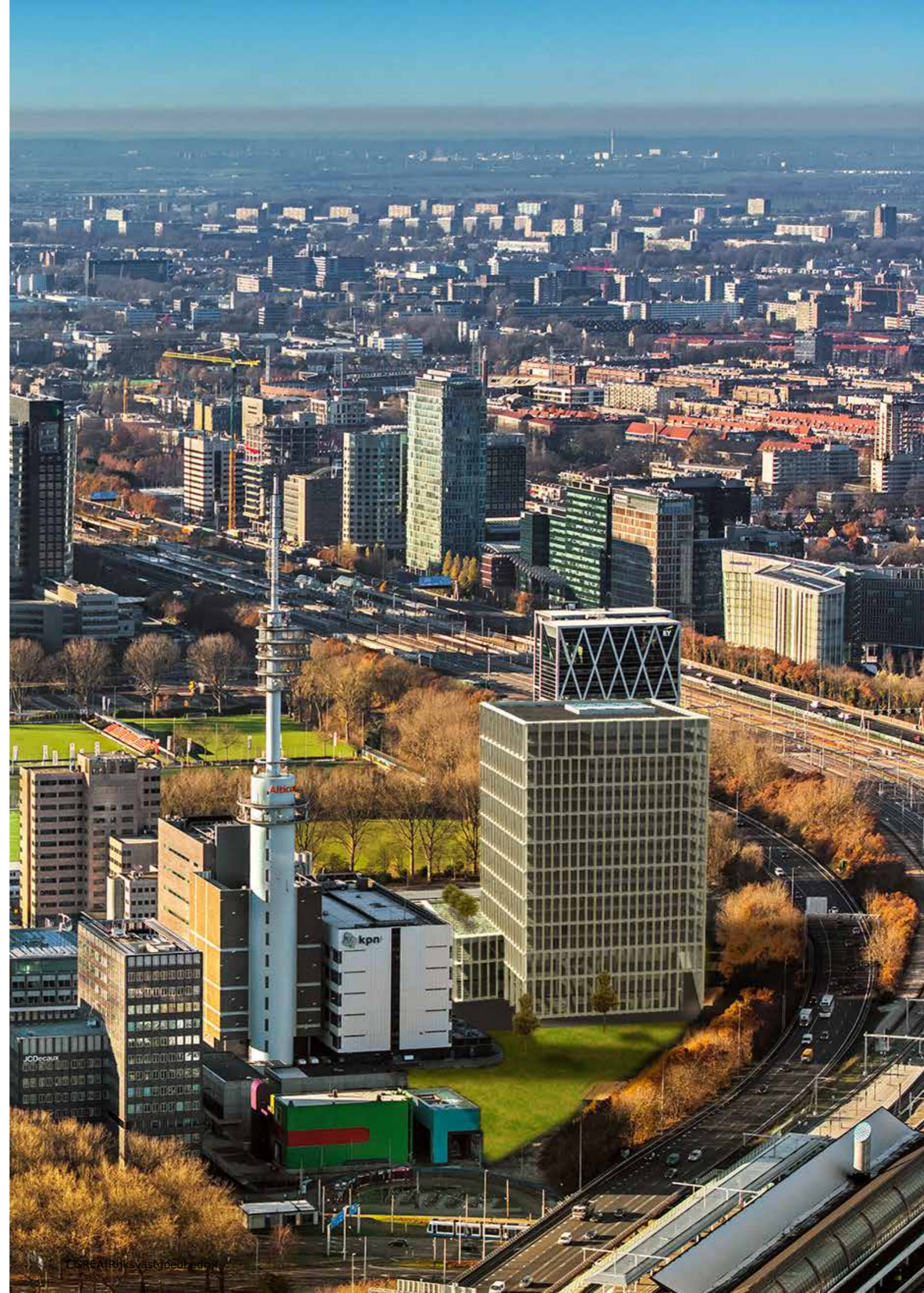


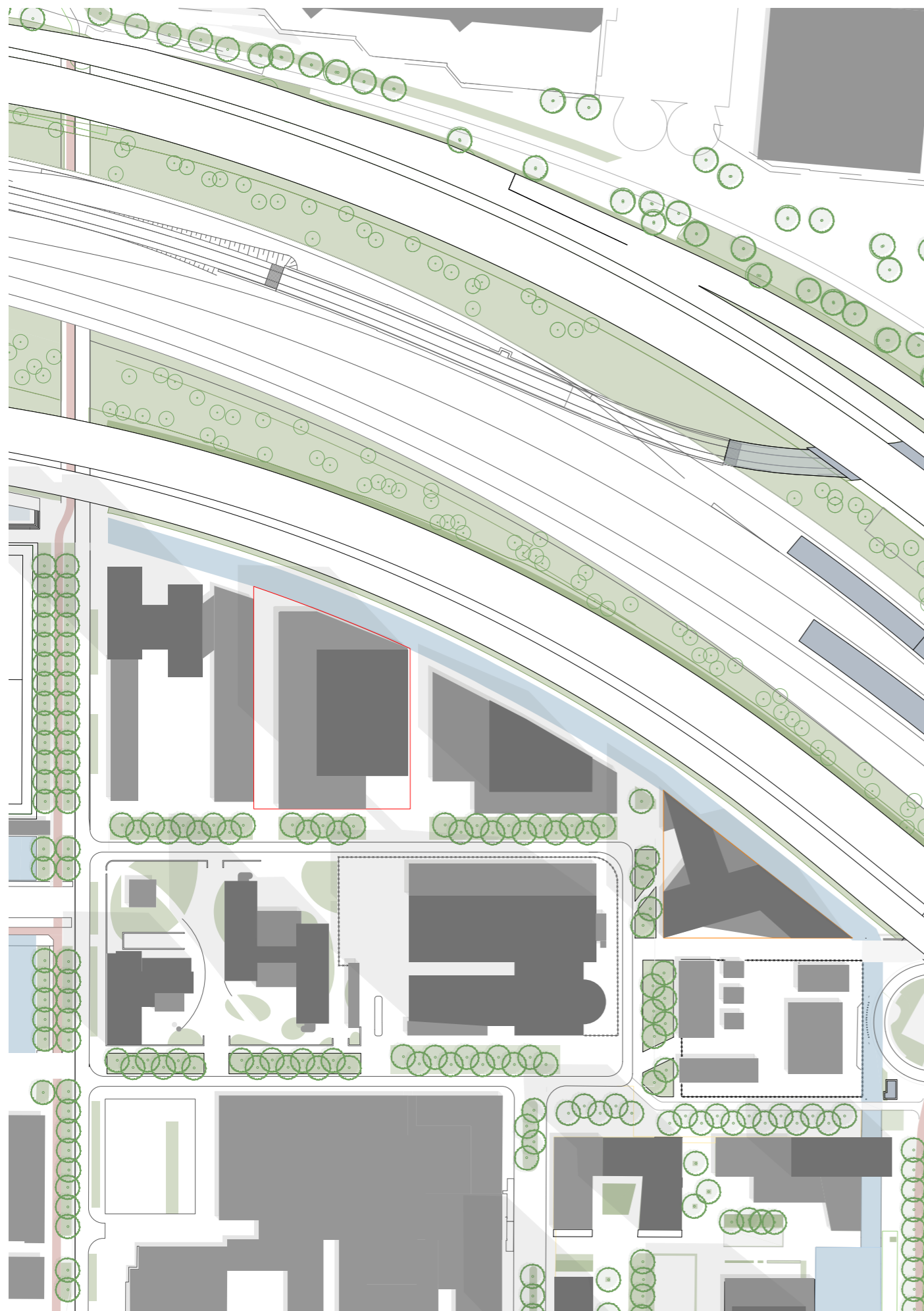
Excellent accessibility, plenty amenities, suitable housing and international schools

1300 workstations, high standard meeting rooms, large conference centre with auditorium

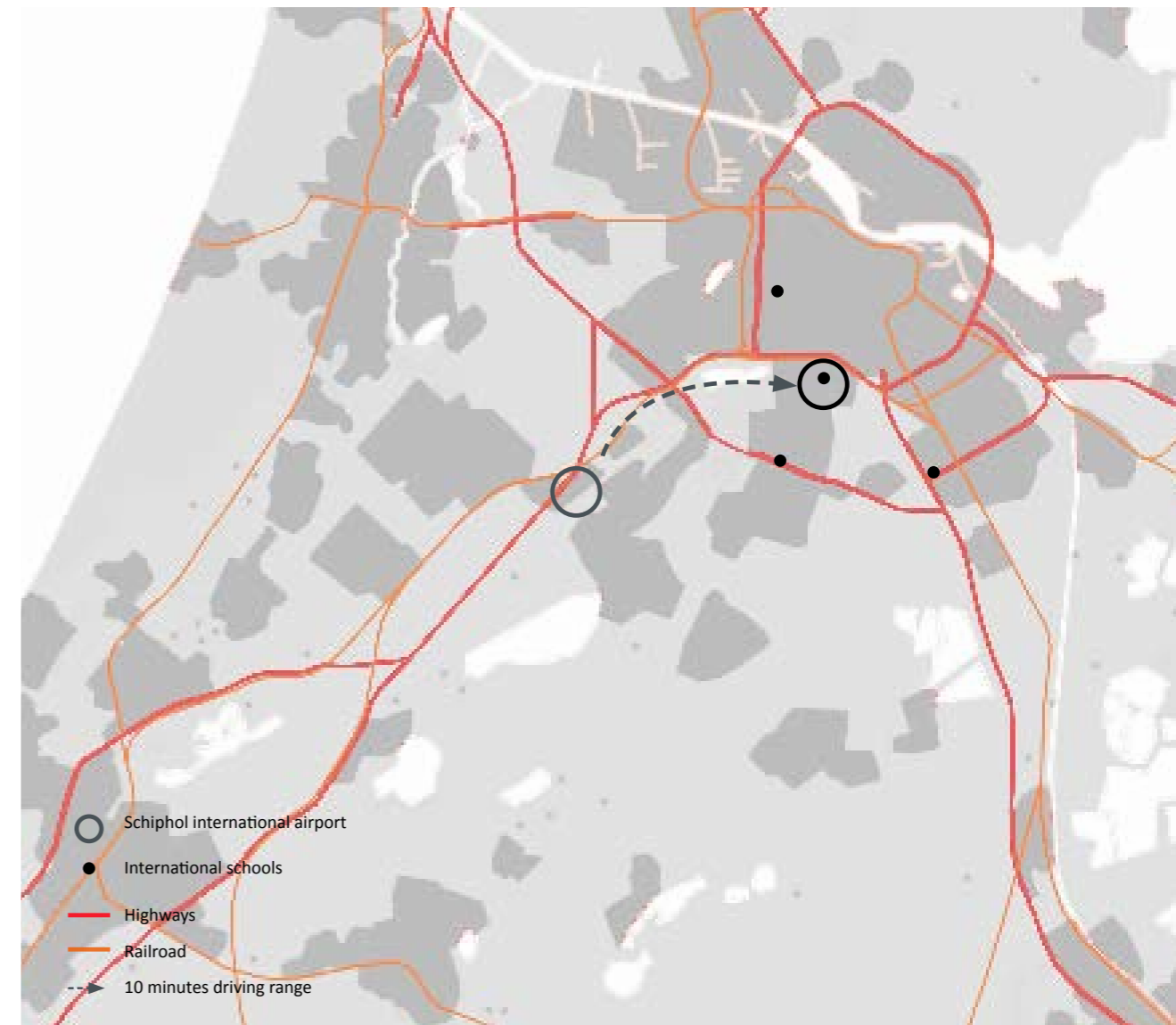
Outstanding sustainability performances, a fitting appearance, a healthy and attractive work environment

*Business continuity
All realised in 2019*





Amsterdam Zuidas; Site drawing; scale: 1:2000



10 minutes from Schiphol, 10 minutes to the city centre

A very central and easily accessible location, safe and fitting plot for the EMA premises

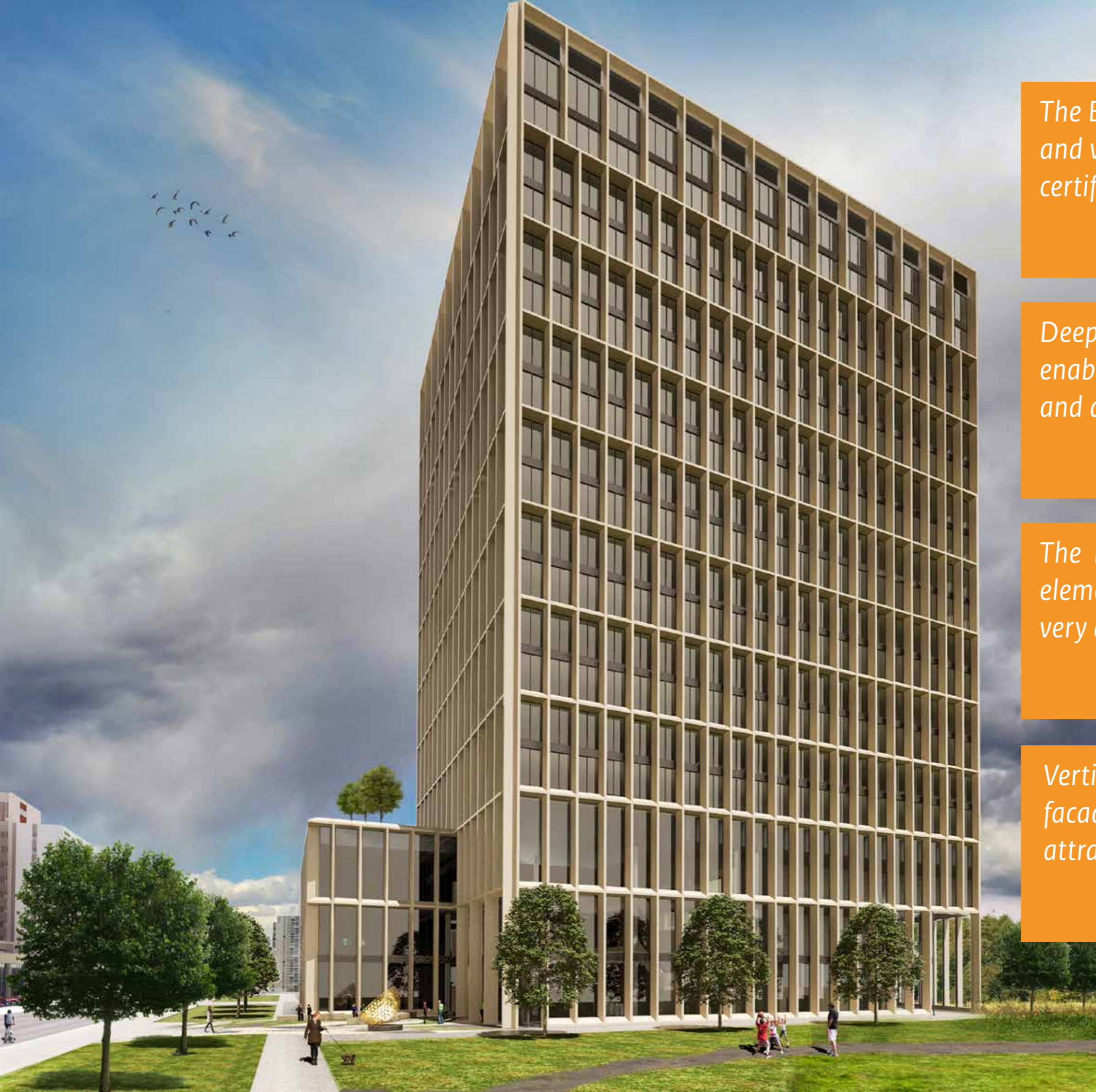
The building is designed for fast and save construction

Facade emphasises EMA as a public authortiy. With order, clarity and clear orientation

Abundant greenery draped around the building puts the strict aesthetics of the building into perspective

The base houses the conference centre and the restaurant, the remaining floors the 1300 workstations





The Building is near energy neutral and will get a Breeam Excellent certificate

Deep frames block direct sunlight, enabling maximum transparency and a pleasant work environment

The representative aluminium elements are easily mounted and very durable

Verticality and subtle changes in the facade rhythm give the building an attractive composition



*The public entrance is inviting
The building will apply the
international accesibility norms*

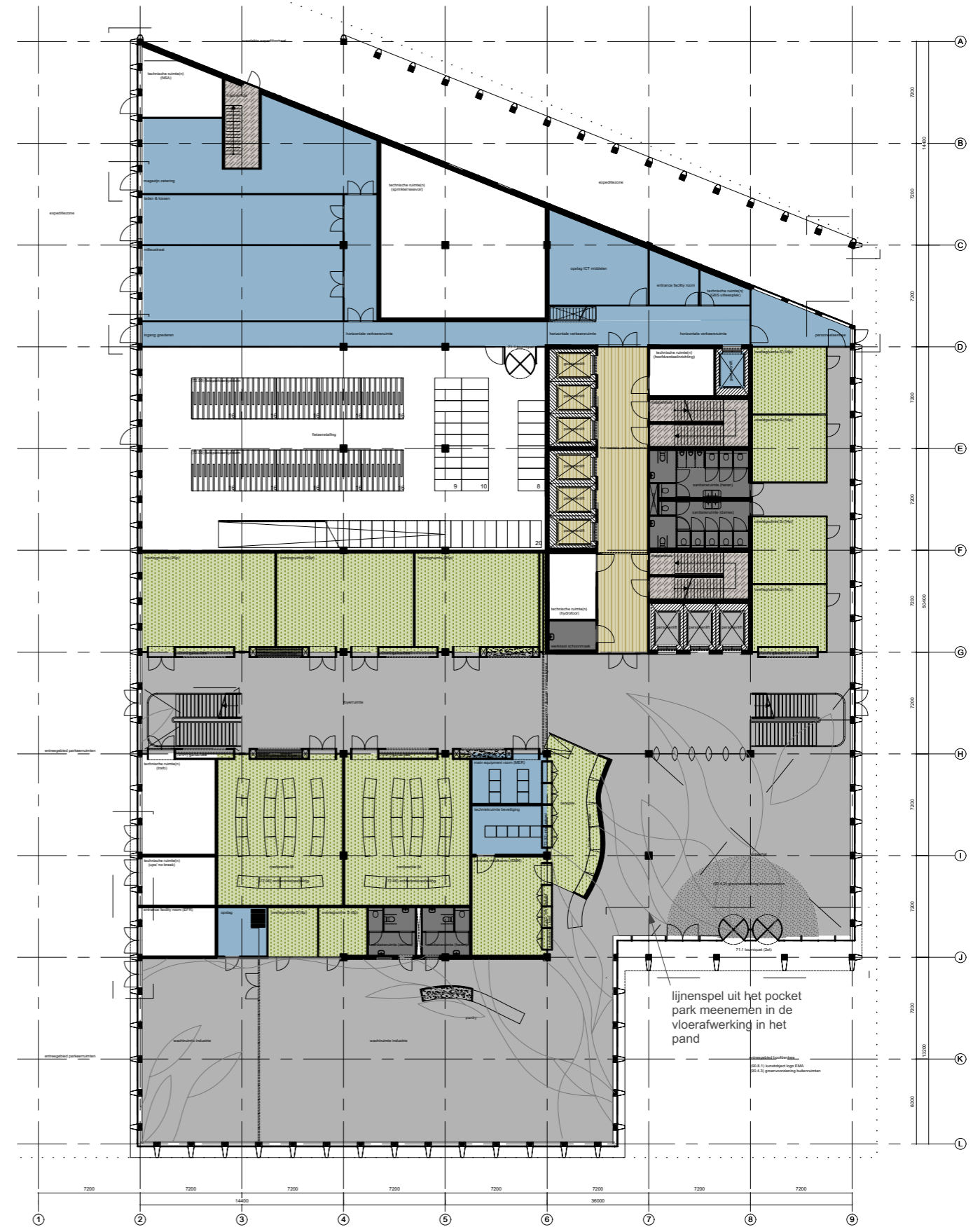


A spacious lobby and foyer area connect the three floors with conference facilities

The loading area is out of sight and well controlled through a private back road

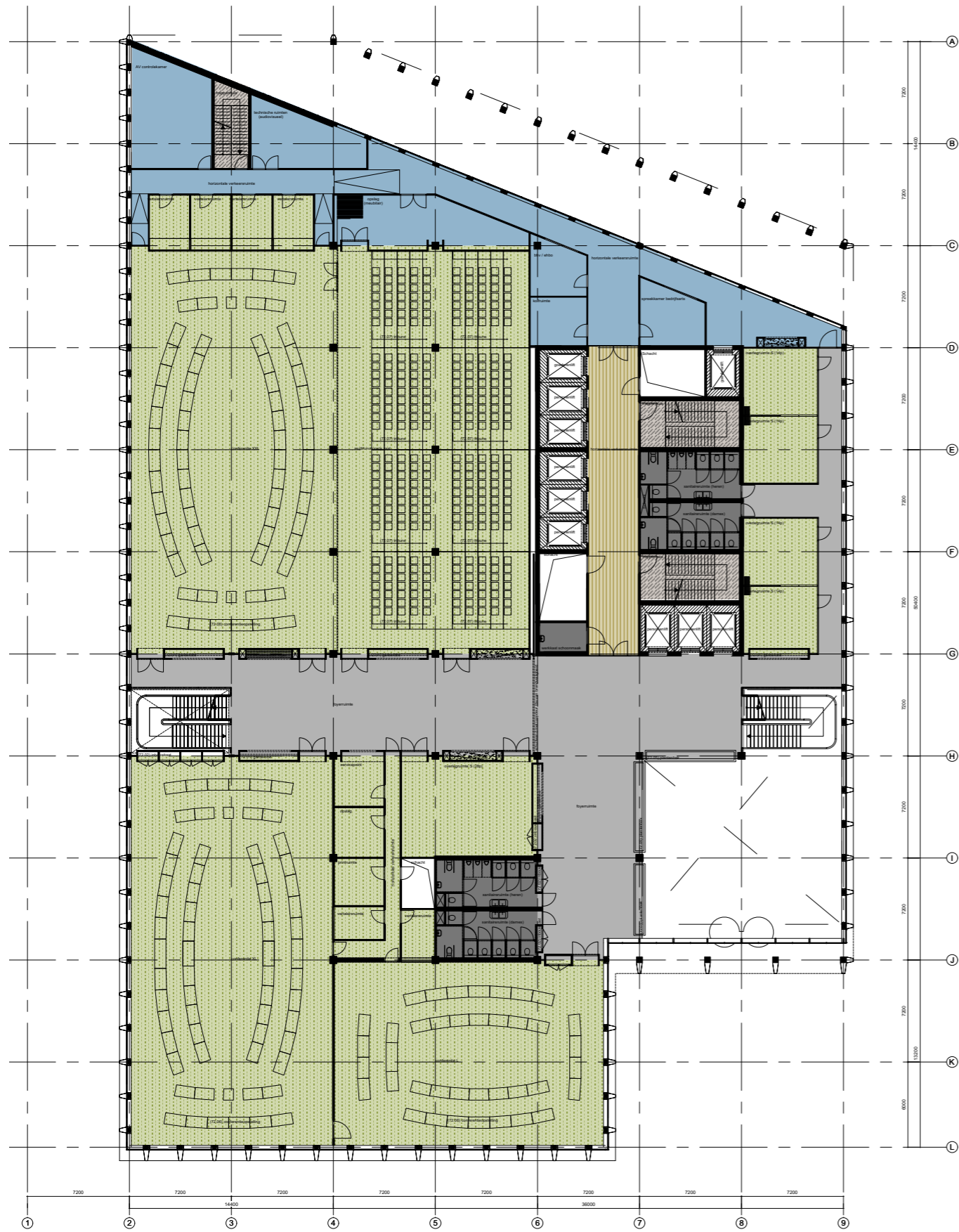
Separate routes for the conference centre, the offices and the restaurant ensure the security and confidentiality of the work

A large industry lounge is made suitable also for press conferences

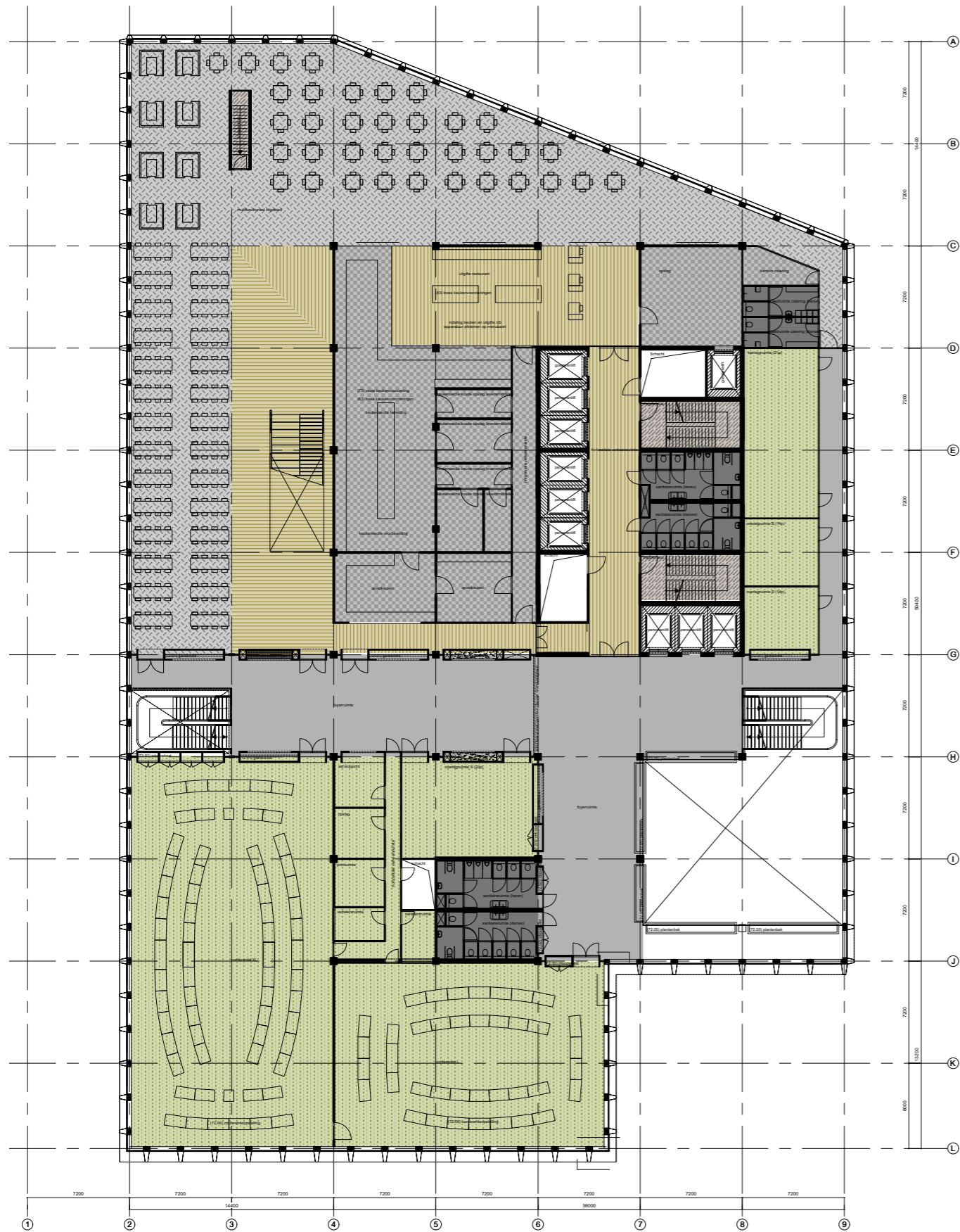


Private expedition and loading area

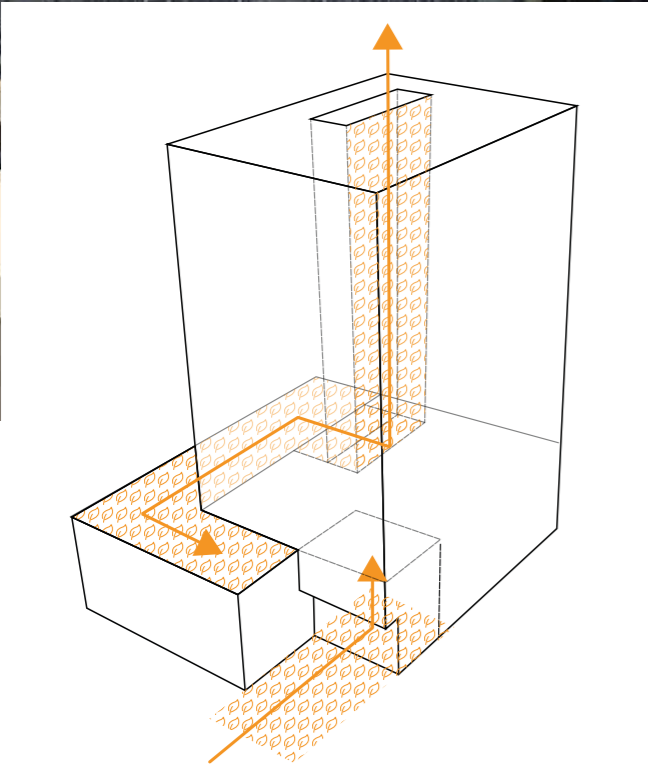
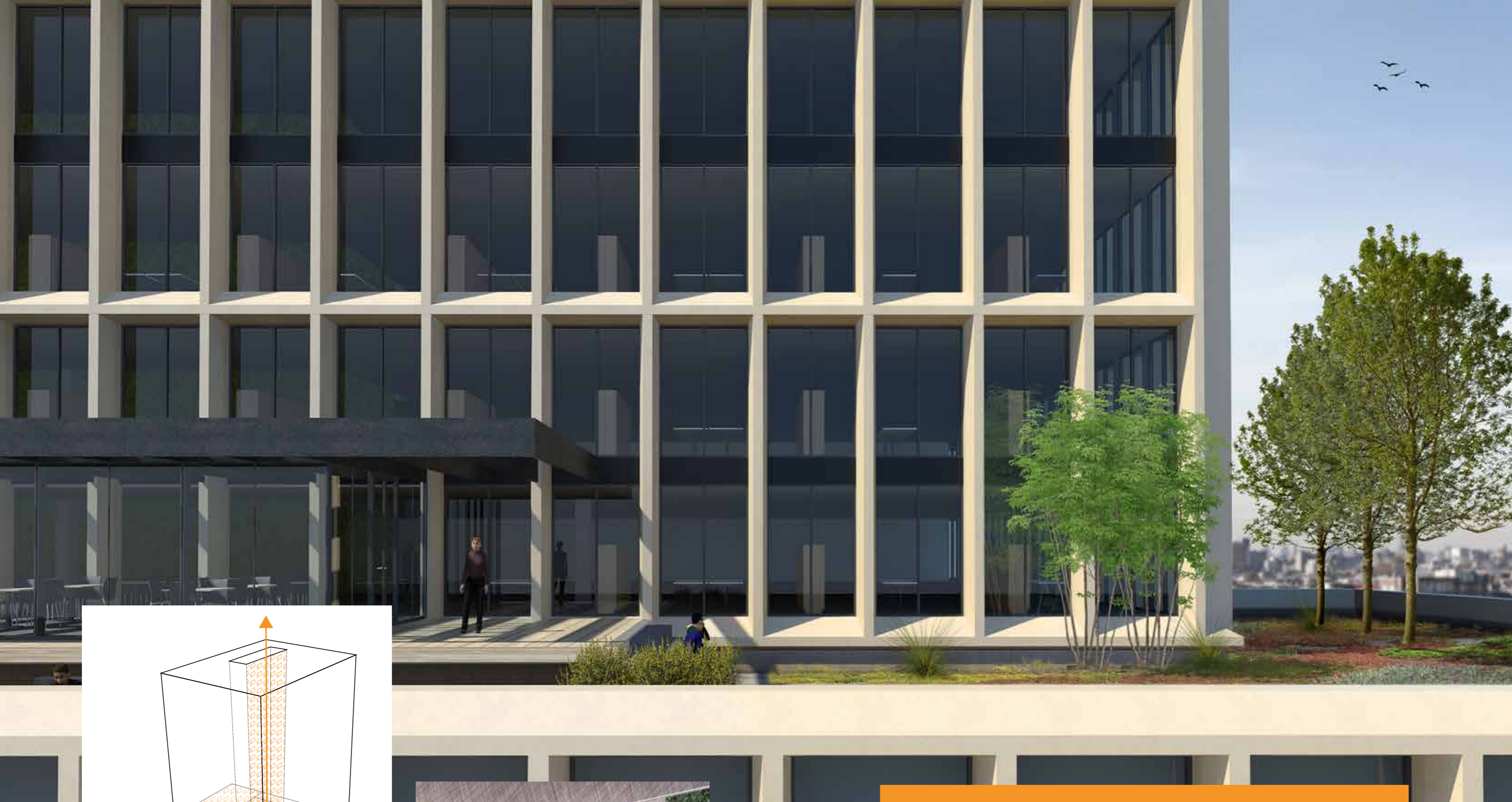




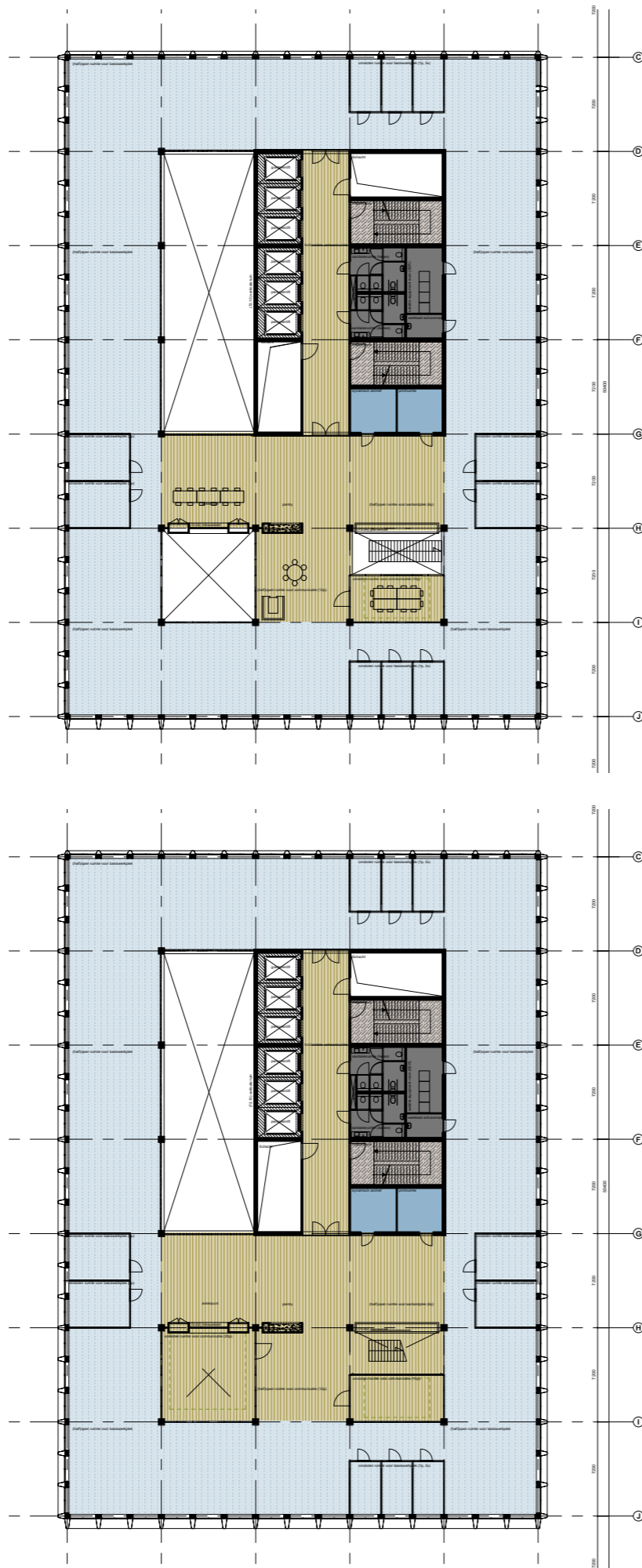
The premises has an XXL conference room for 135 people with a gallery for 300. Two XL rooms for 120 people, two L rooms for 80 and two rooms for 50 people along with the other required functionalities.



The restaurant is next to the conference area, while the espresso bar is connected to the large roof garden



A large roof garden and a spectacular green wall inside the office improve the working climate and the biodiversity. They provide pleasant breakout spaces.



There are 15,5 office floors with a net usable area (outside the core) of 1335 m² per floor for workspaces and supporting functions

Every floor for app. 85 workdesks has a 10 people meeting room, every other floor has a double height 20 people meeting room





Ready to use:
15 - 11 - 2019

*Starting 01-01-2019 the
SPARK building is available
for EMA*

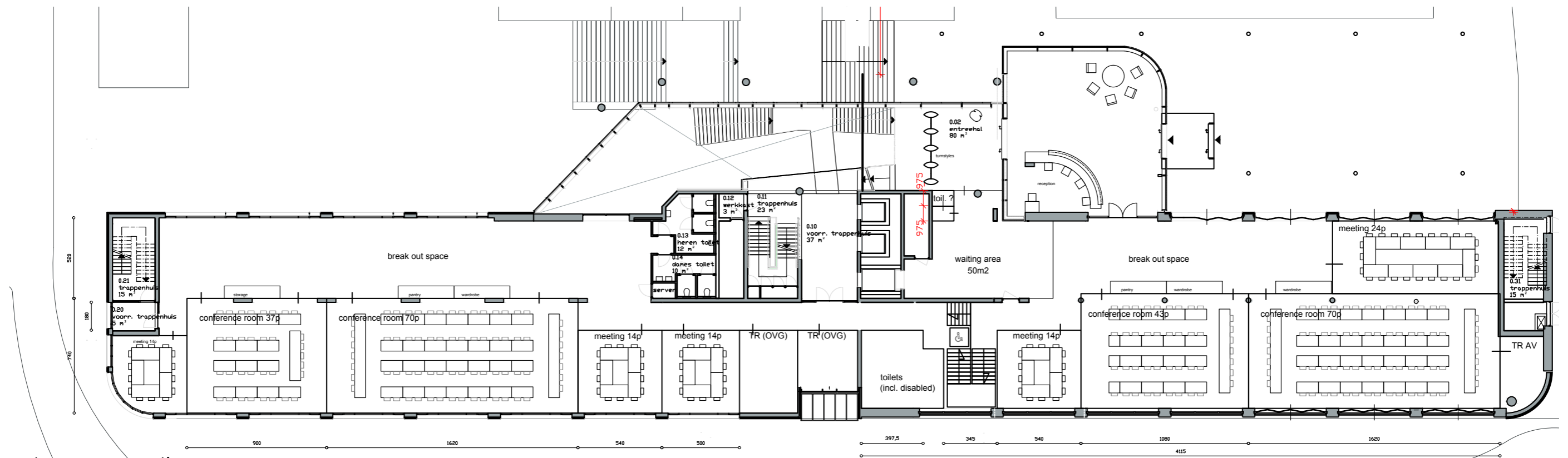




THE PROGRAM WILL ENABLE
BUSINESS CONTINUITY

*870 workstations
internal meeting rooms
restaurant
storage and facilities*

*3 conference rooms for 90 people
2 conference rooms for 40 people
5 meeting rooms for 14-24 people
necessary AV and IT infrastructure*

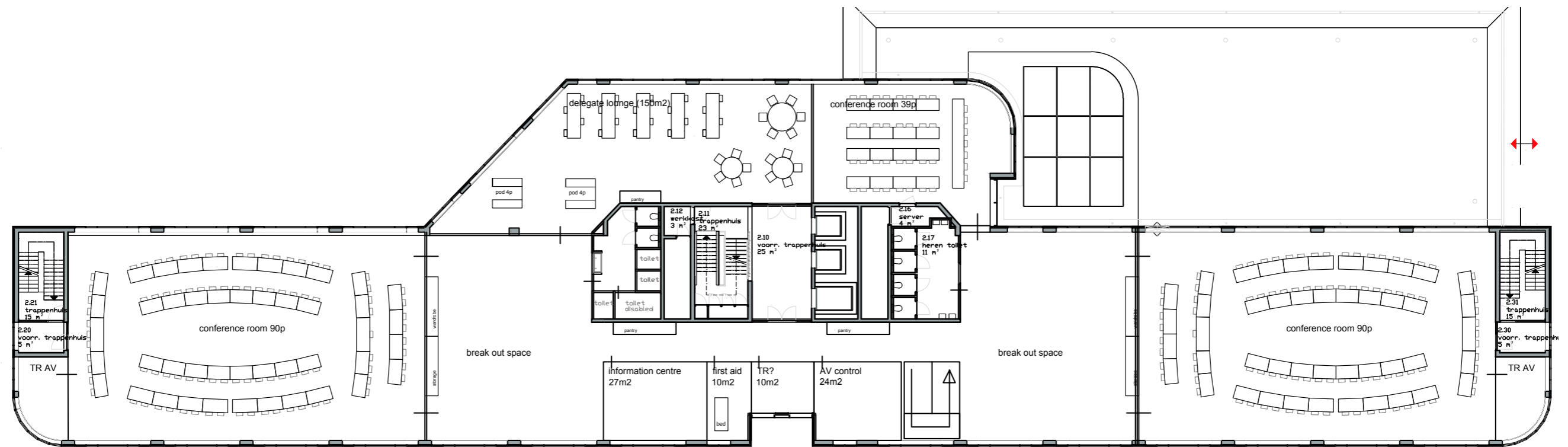


entrance, reception

9 meeting rooms: 2x70p, 2x37p, 1x24p, 4x14p

breakout and supporting functions

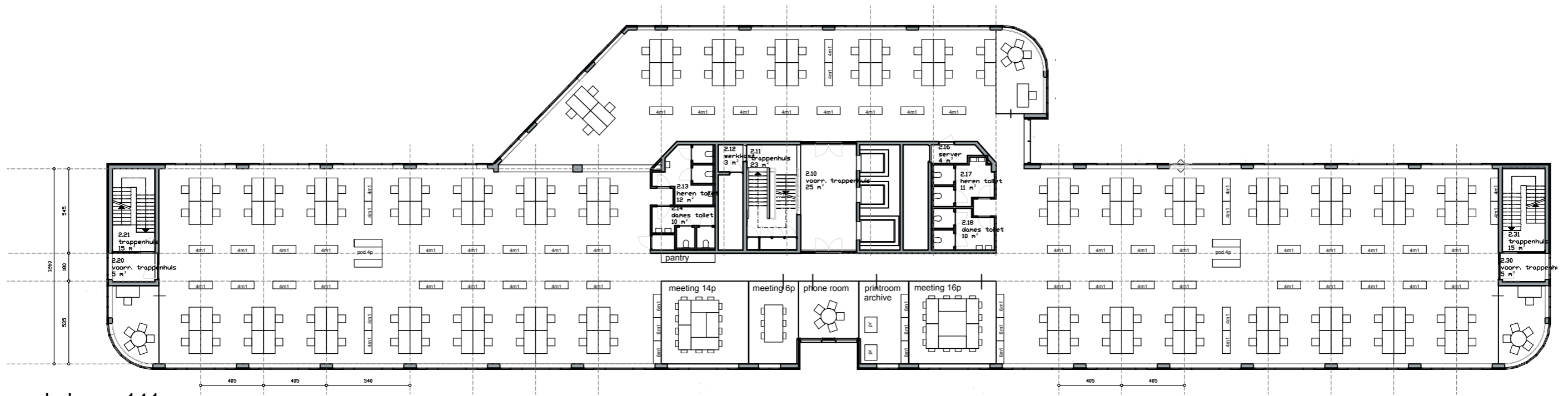
ground floor



meeting rooms 2x90p, 1x 40p

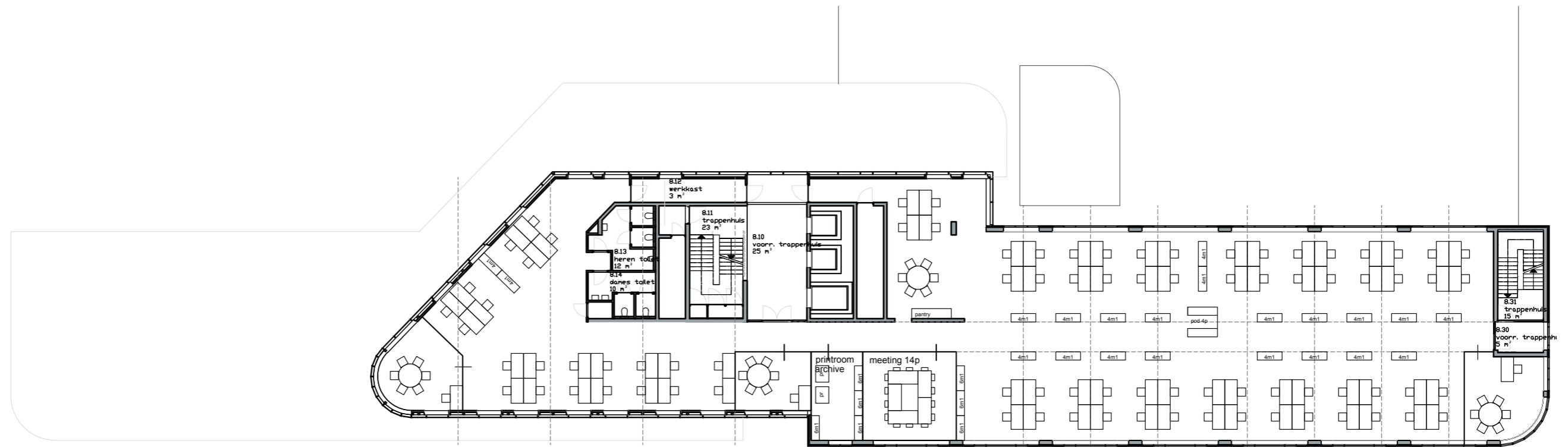
industry lounge

floor 2



workplaces 141
 3-6: total 568
 storage: 2m1/wpl

floor 3-6



workplaces 85
 storage: 2m1/wpl

floor 8



high quality finishings

Design team CGREA

Fokke van Dijk, Yuri Kloet Juliao, Daan Hammink, Michael Vrijhof, Dittie Bakker, Mirjam Segeren, Maaïke Ebberink, Bianca Derksen, Bart Kimman, Marco Jaspers, Gertjan Verbaan, Barry Kommeren, Chris Rentier.



QUESTIONS?