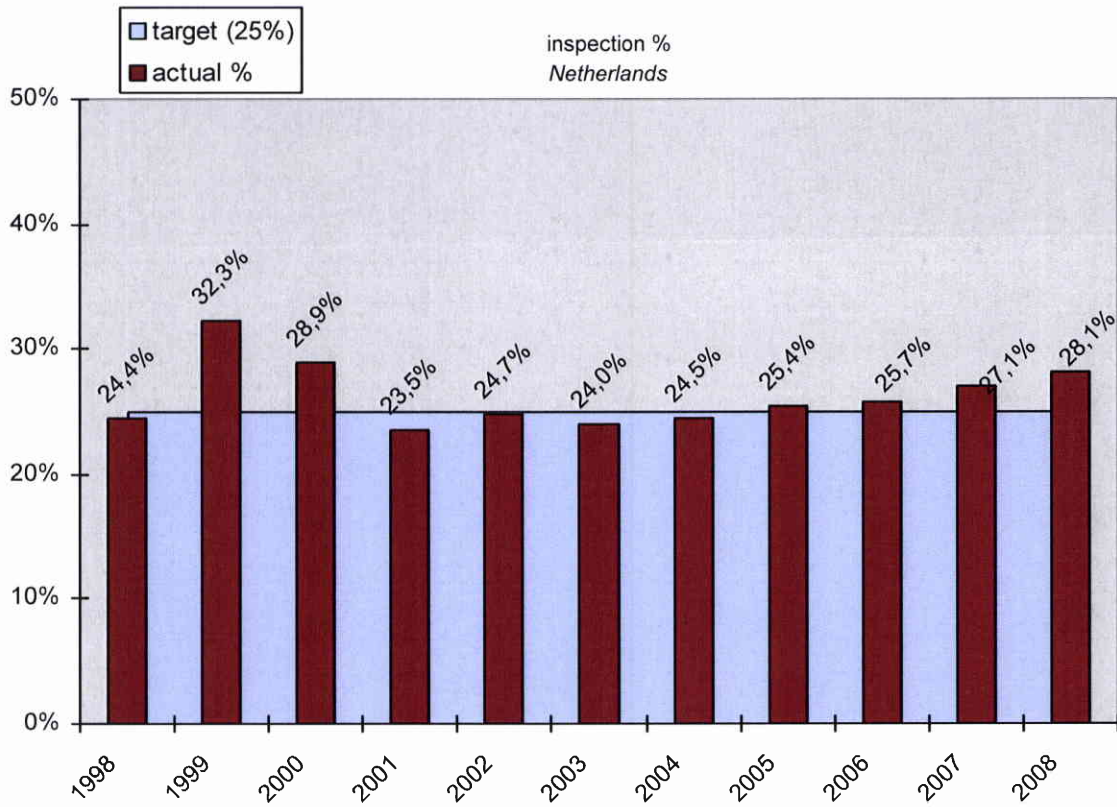
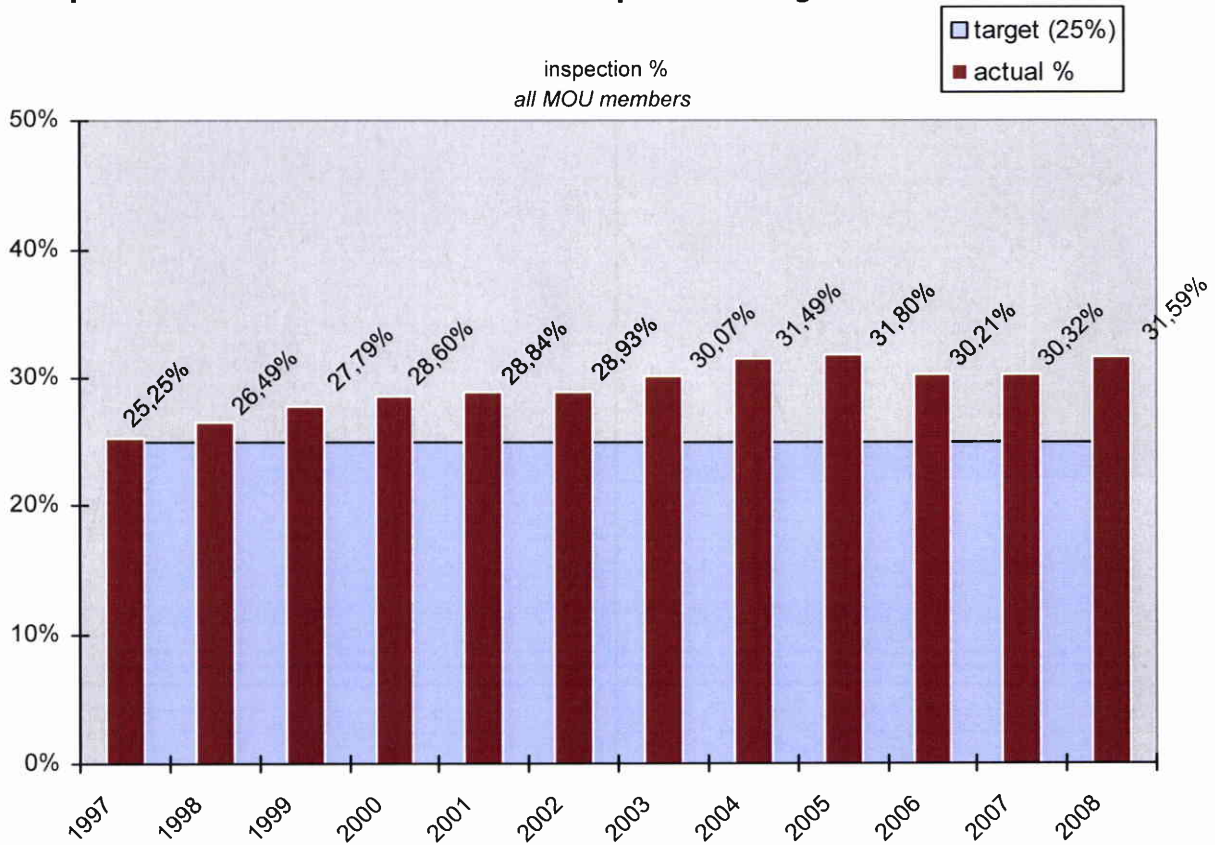


### Inspection efforts of The Netherlands compared to target

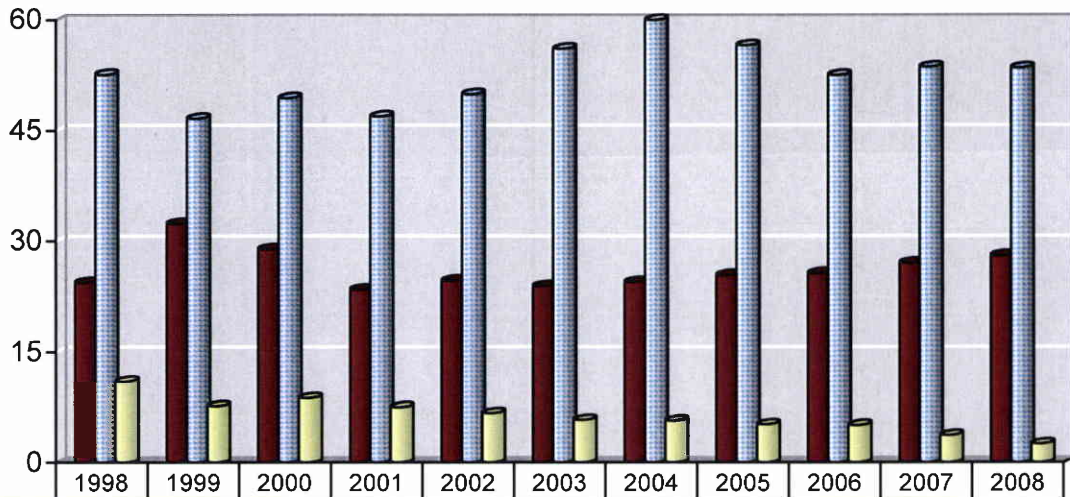


### Inspection Efforts of the Paris MoU compared to target



## Inspection, deficiency and detention percentages for The Netherlands (Port State)

inspection / deficiency / detention %  
Netherlands



	1998	1999	2000	2001	2002	2003	2004	2005	2006	2007	2008
■ inspection %	24,4	32,3	28,9	23,47	24,69	23,95	24,51	25,43	25,69	27,06	28,06
▨ deficiency %	52,6	46,6	49,4	46,94	49,93	56,07	61,14	56,52	52,49	53,59	53,46
■ detention %	10,9	7,6	8,7	7,47	6,67	5,77	5,64	5,17	5,05	3,7	2,51